

118°32'30"W R.32E. 118°30'0"W 118°27'30"W R.33E. 118°25'0"W 118°22'30"W 118°20'0"W R.34E. 118°17'30"W

**GLASS PROHIBITION
EXHIBIT C**



USDA - Forest Service
Sequoia National Forest
Kern River Ranger District

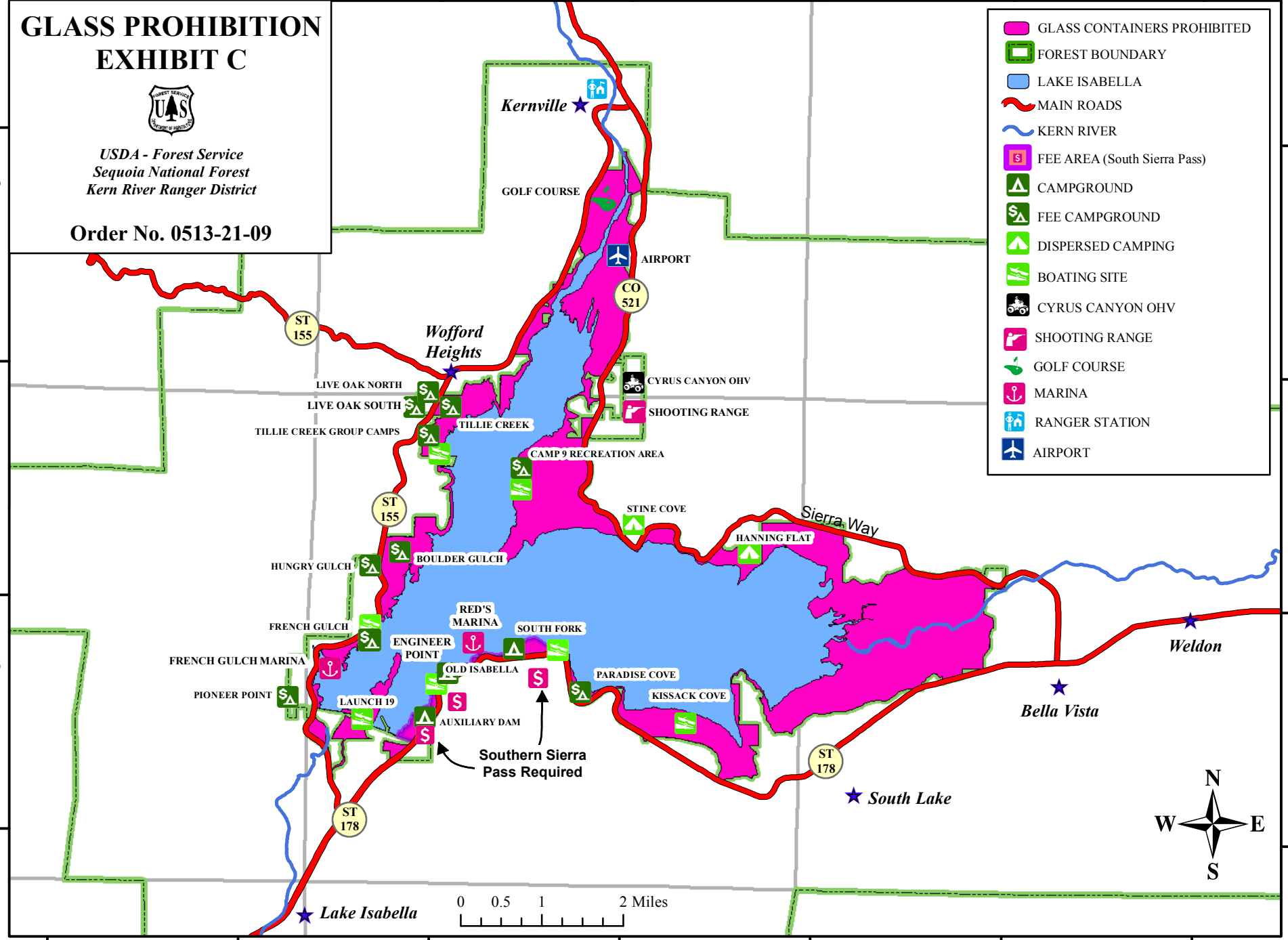
Order No. 0513-21-09

-  GLASS CONTAINERS PROHIBITED
-  FOREST BOUNDARY
-  LAKE ISABELLA
-  MAIN ROADS
-  KERN RIVER
-  FEE AREA (South Sierra Pass)
-  CAMPGROUND
-  FEE CAMPGROUND
-  DISPERSED CAMPING
-  BOATING SITE
-  CYRUS CANYON OHV
-  SHOOTING RANGE
-  GOLF COURSE
-  MARINA
-  RANGER STATION
-  AIRPORT

35°45'0"N
35°42'30"N
35°40'0"N
35°37'30"N

35°45'0"N
35°42'30"N
35°40'0"N
35°37'30"N

118°32'30"W 118°30'0"W 118°27'30"W 118°25'0"W 118°22'30"W 118°20'0"W 118°17'30"W



0 0.5 1 2 Miles

